

This is an beta website by [Inclusive Bytes CIC](#), The aim is to create one location for digital resources in Oldham.



- [Home](#)
- [Tutorials](#)
- [Events](#)
- [Resources](#)
- [Hubs](#)

How do I Import and Edit a Divi Builder Layout?

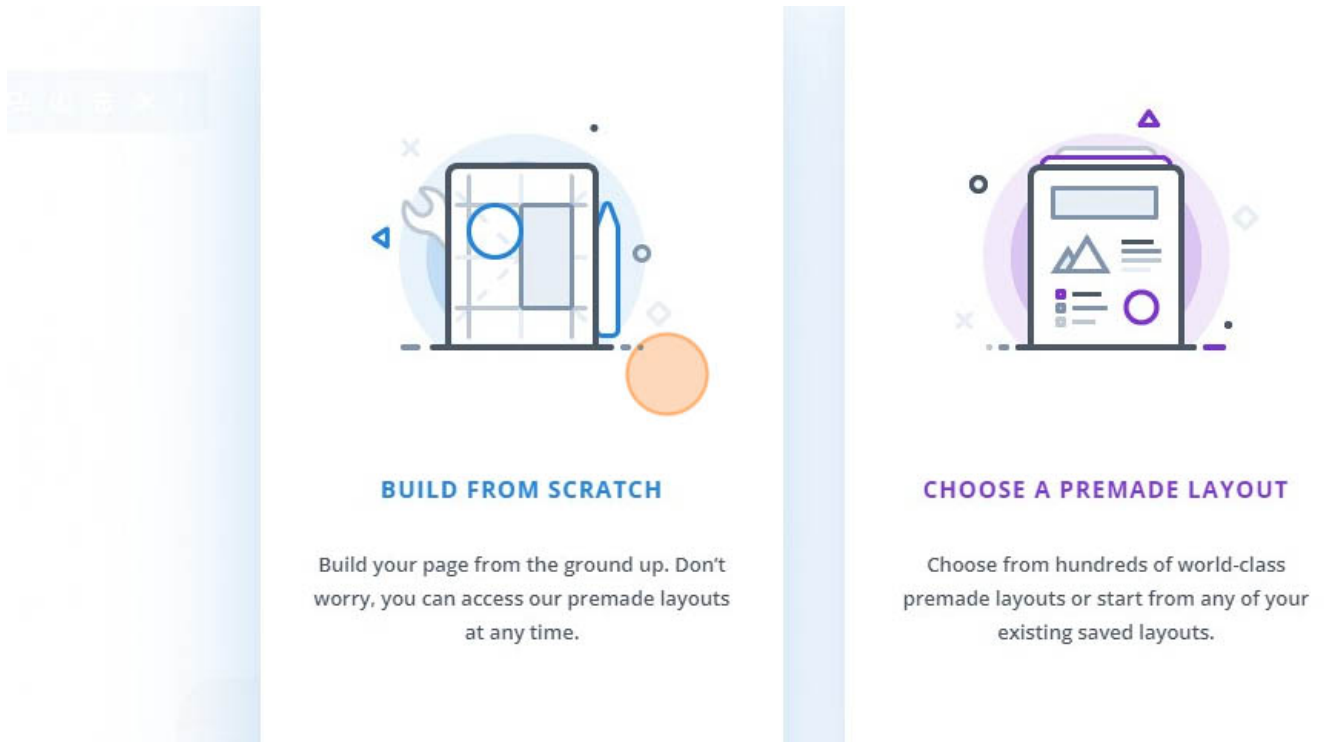
1. Navigate to <https://yourwebdomain.co.uk/your-page/>
2. Click “Enable Visual Builder”



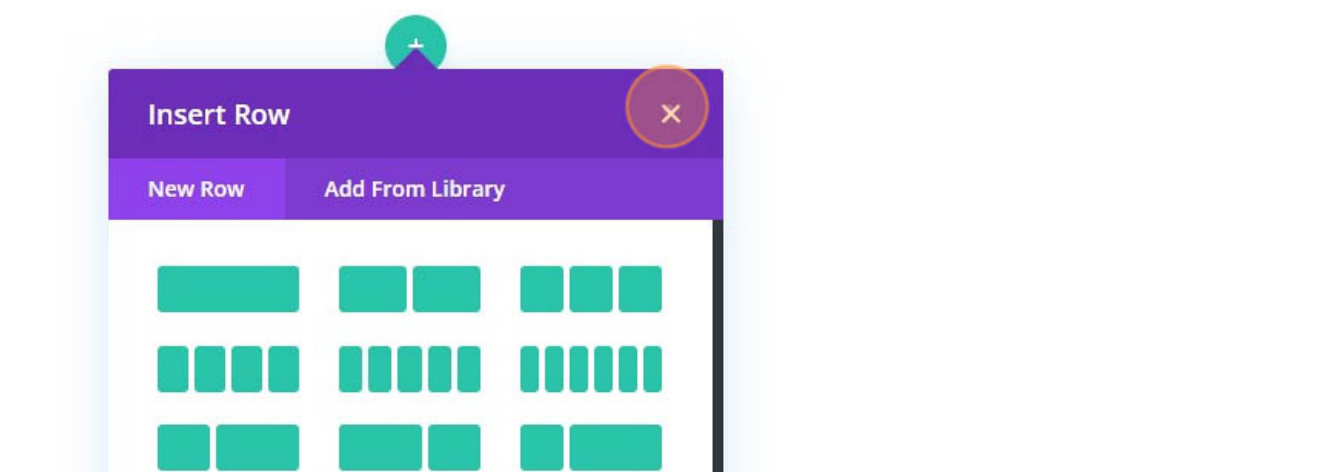
[Home](#) [About](#) [Services](#) [What's On](#) [Rail](#)

[Make a Donation](#)

3. Click this image.



4. Click here.



5. Click here.

Make a Donation



teway



What we offer



What's on

6. Click here.

Make a Donation

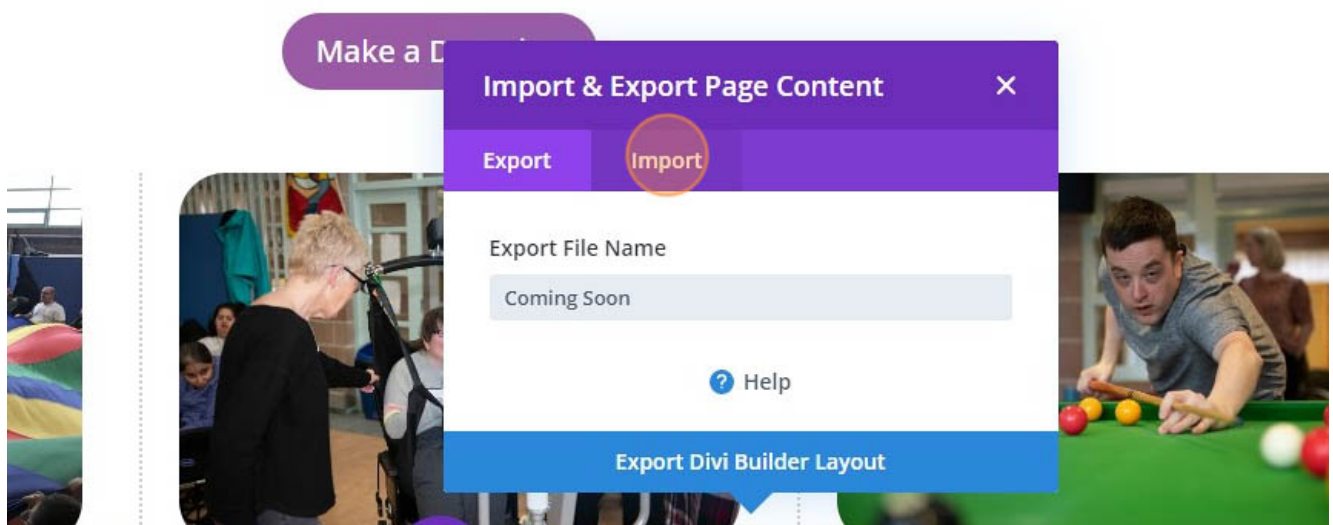


What we offer

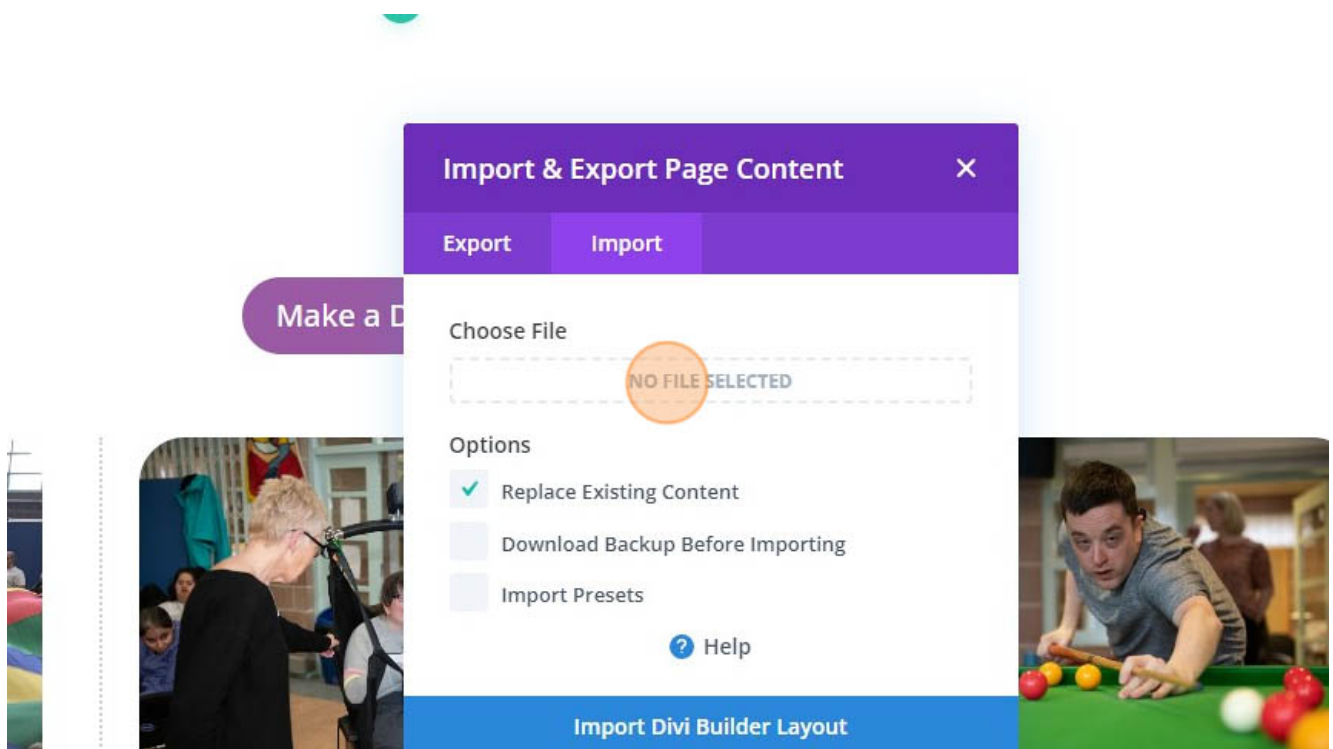


What's on

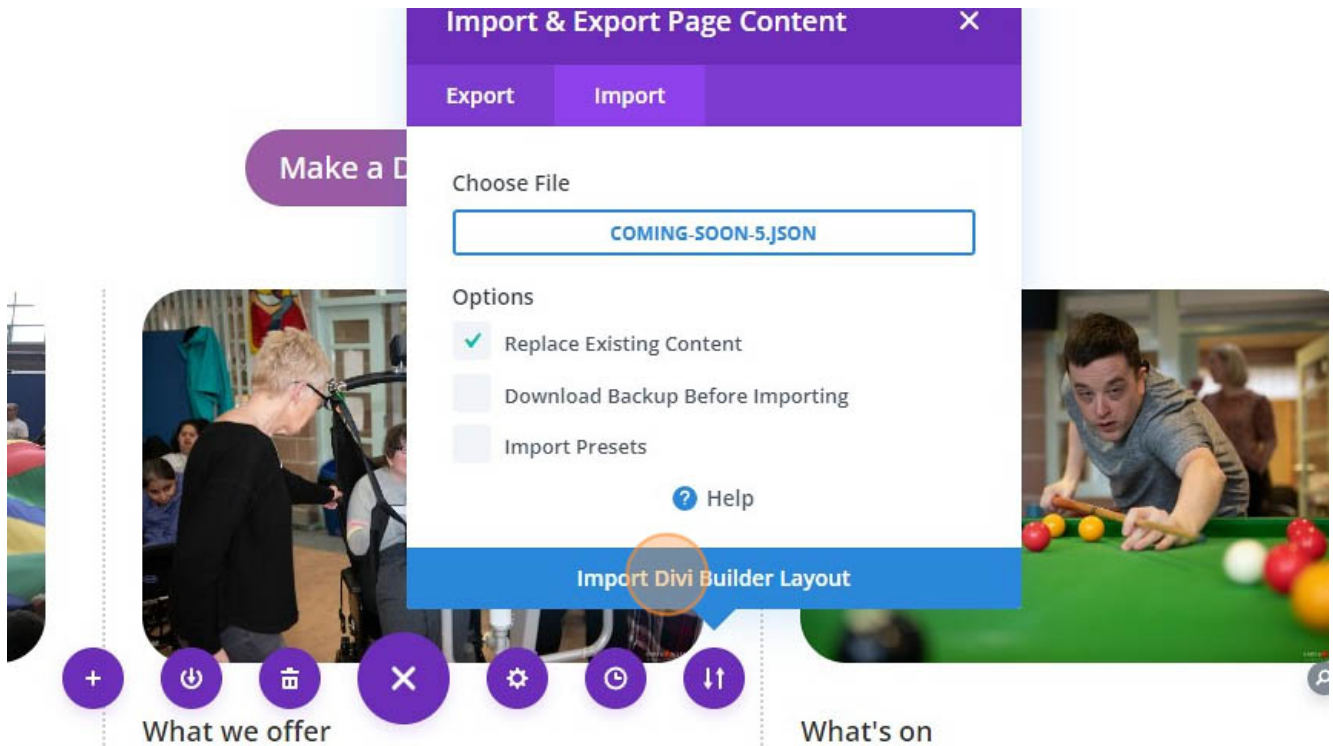
7. Click "Import"



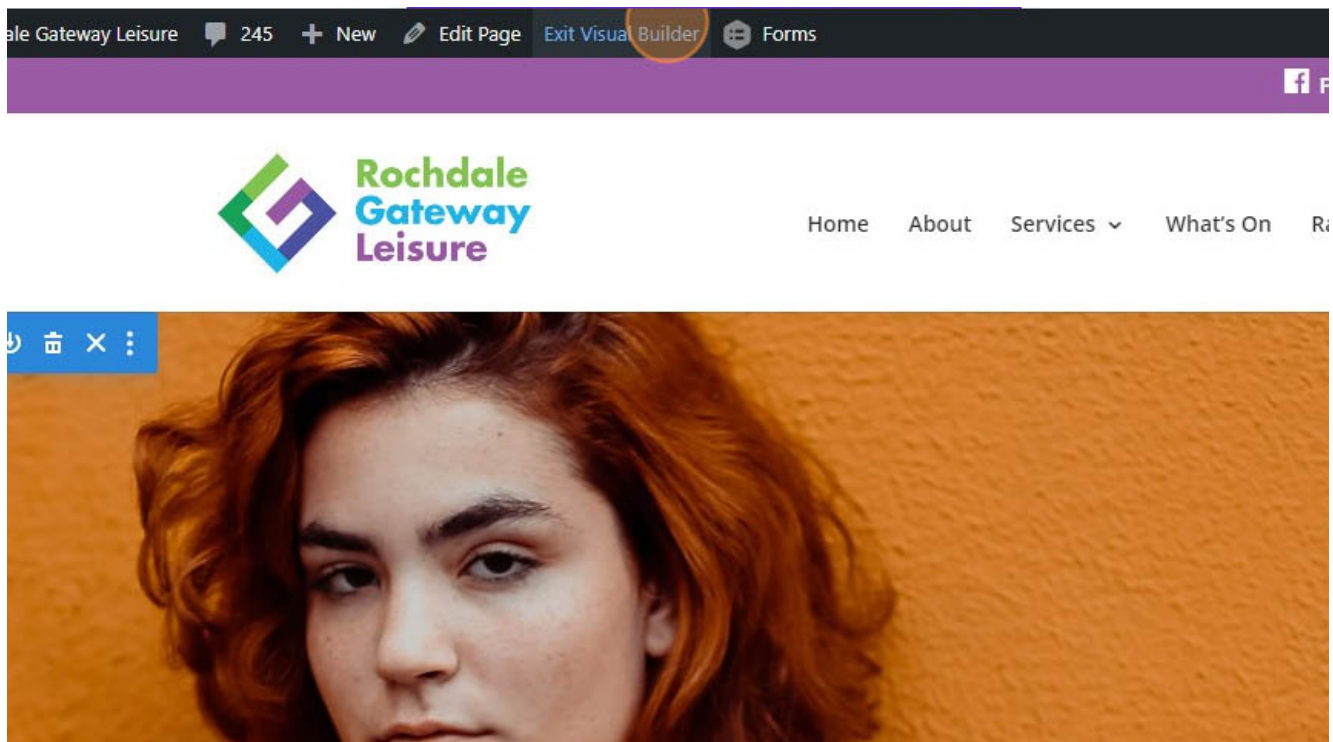
8. Click this file field.



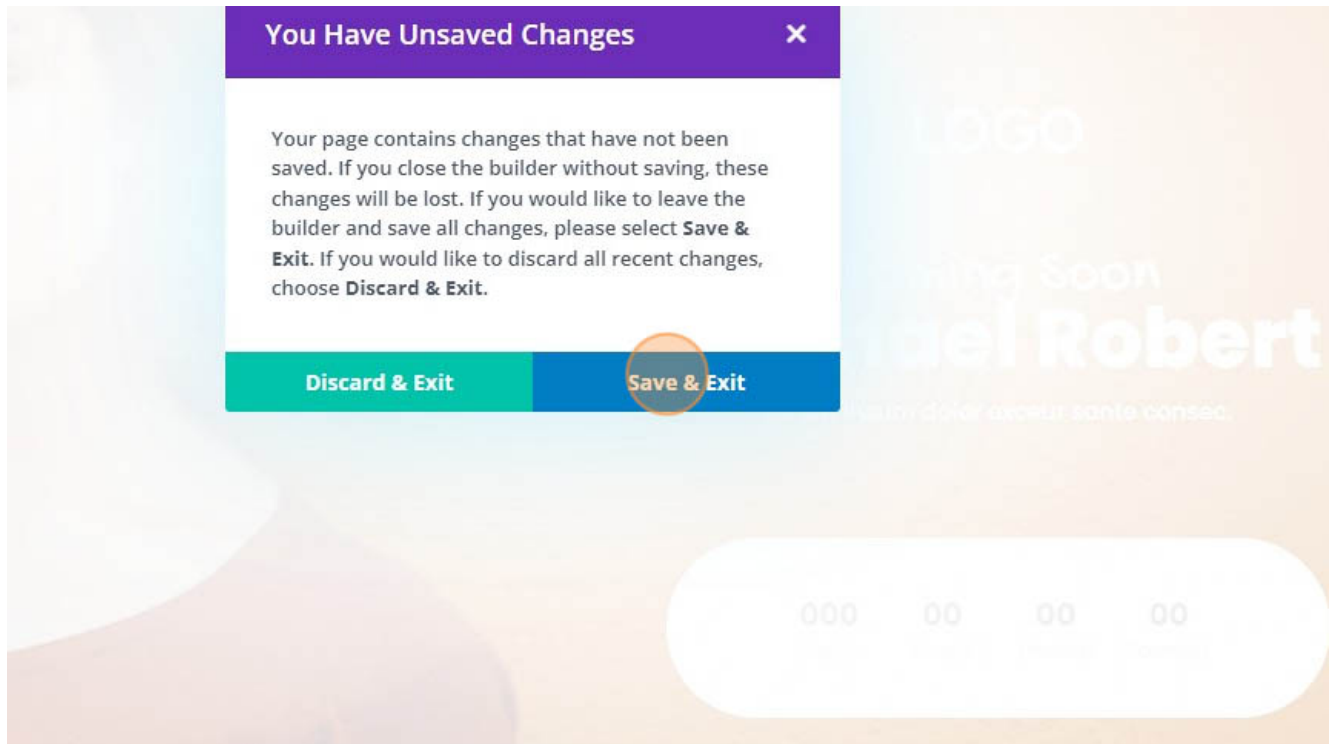
9. Click "Import Divi Builder Layout"



10. Click “Exit Visual Builder”



11. Click “Save & Exit”



Made with the help and support of [Inclusive Bytes CIC](#)

[Training](#) | [Reporting](#)